

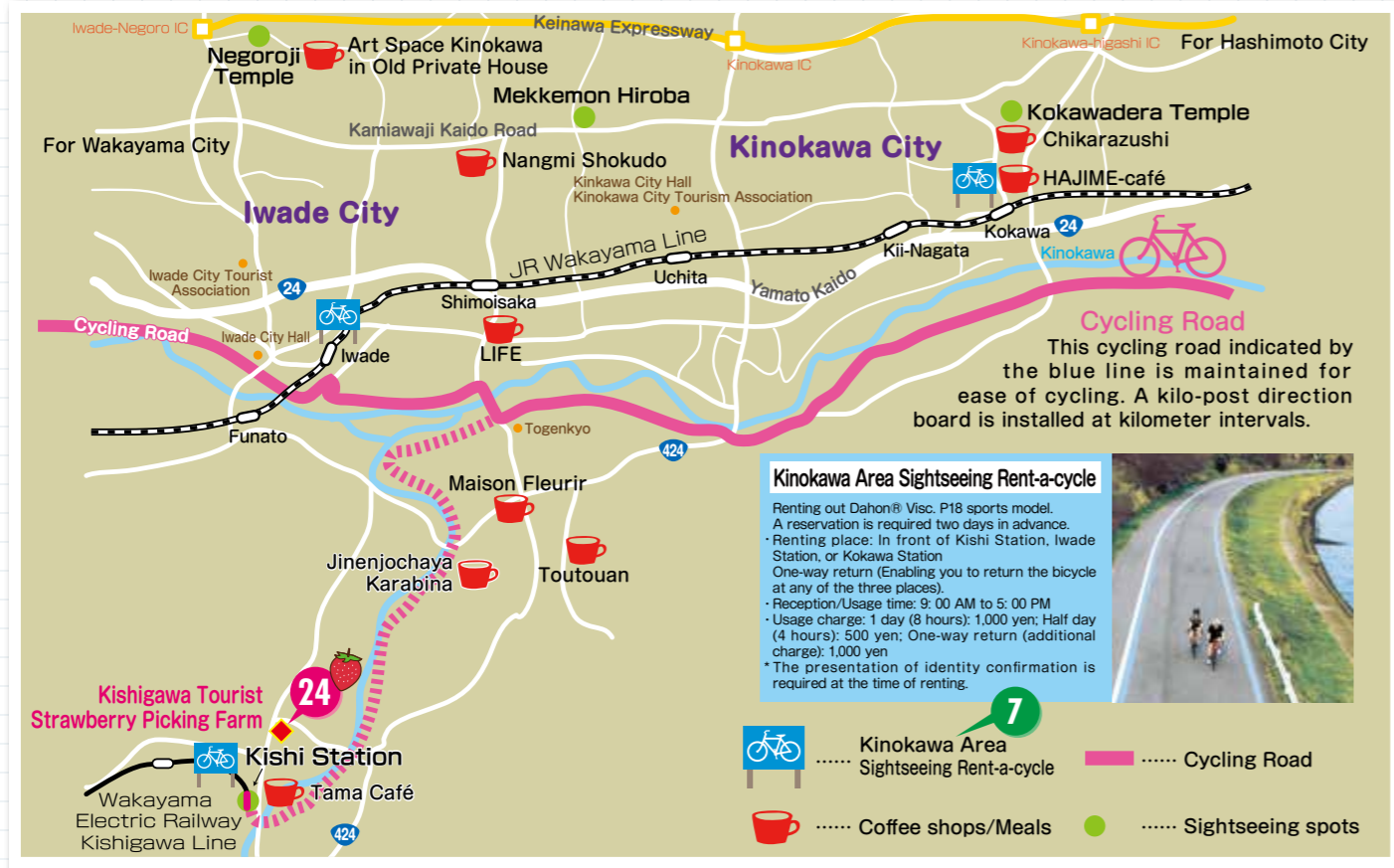
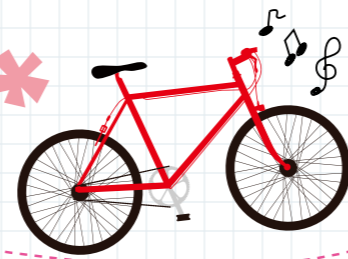
# Wakayama's Cycling Road

## Kinokawa Cycling

The Kinokawa area in the northern part of Wakayama Prefecture maintains a cycling-dedicated road that extends mainly along the Kinokawa riverbeds. Some restaurants and Fruits Picking Spots along the road have road bike stands. This dedicated road has few ups and downs, which ensures ease of cycling and makes it possible for cyclists to enjoy a relaxing cycling trip.

Inquiry : Kinokawa Area Tourism Cycling Promotion Council  
Tel. (+81)736-61-0014 E-mail : e1302161@pref.wakayama.lg.jp

Follow the traffic rules and be aware of the safety of pedestrians when cycling.

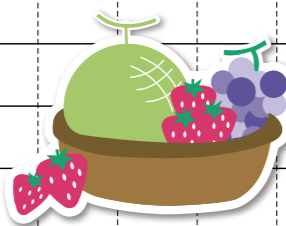


## Taste Hunting in Wakayama

Wakayama is endowed with a good climate and various crops are harvested throughout the year. Why do not you experience genuine agriculture with fun?

### Fruit Picking Calendar

Month	Jan.	Feb.	Mar.	Apr.	May	June	July	Aug.	Sep.	Oct.	Nov.	Dec.
<b>Strawberry</b>	Early in Jan.					Mid-May						
<b>Blueberry</b>						Early in June		Late in Aug.				
<b>Peach</b>						Late in June		Late in Aug.				
<b>Melon</b>						Late in June		Late in Aug.				
<b>Grape</b>						Mid-July				Late in Oct.		
<b>Persimmon</b>								Mid-Sep.		Early in Dec.		
<b>Citrus fruit in general</b>						(Late in July)		(Mid-Sep.)		Early in Oct.		Late in Dec.



No.	Experience Menu	Operator	Address	Telephone Japanese only +81	Web URL		Acceptance conditions of overseas visitors
					Mail address		
1	Sushi Chef Experience Plan	Kuroshio Market	1527 Kemi, Wakayama City	073-448-0300	http://www.kuroshioichiba.co.jp/	yoyaku@kuroshioichiba.co.jp	None
2	SUP (Stand Up Paddle) Boarding School	KAZE	989 Kemi, Wakayama City	073-447-1545	http://www.eonet.ne.jp/~kaze2001/index1.html	kaze2001@gaia.eonet.ne.jp	Eleven years of age or over accompanied by someone who understands Japanese.
3	Patterned Lacquerware Experience	Uruwashi-Kan (Traditional Kishu Lacquerware Industry Center)	222 Funo, Kainan City	073-482-0322	http://www.chuokai-wakayama.or.jp/sikki-k/	sikki@flute.ocn.ne.jp	Nine years of age or over accompanied by someone who understands Japanese.
4	Umesyu plum Liqueur Making Experience	NAKANO BC Co., Ltd.	758-45 Fujishiro, Kainan City	0120-050-609	http://www.nakano-group.co.jp/sightseeing/index.html	cyokuhan@nakano-group.co.jp	Reservation required.
5	Temple Lodging Experience/Sutra Hand Copying/Ajikan Meditation	Koyasan Shukubo Association	600 Koyasan, Koya Town	0736-56-2616	http://eng.shukubo.net/	None	Nothing in particular.
6	Sanadahimo Weaving Experience	Sanadahimo Weaving Workshop	1390-1 Kudoyama, Kudoyama Town, Ito-gun	0736-54-2019 (Kudoyama-cho Board of Education)	None	None	Reservation required. With an interpreter or someone who understands Japanese.
7	Bicycle Rental	Kinokawa Area Tourism Cycling Promotion Council	HAJIME-café (In front of JR Kokawa Station) 853-3 Kokawa, Kinokawa City Natural Food Store Sion (in front of Wakayama Electric Railway's Kishi Station) 802 Kodo, Kishigawa Town, Kinokawa City Studio Fujihira (in front of JR Iwade Station) 65-14 Takatsuka, Iwade City	090-9217-7476	http://www.pref.wakayama.lg.jp/prefg/130200/rentalcycle/rentalcycle.html	None	Reservation required before at least two days in advance. Pre-adjustments required in case of a reservation of visitors in excess of five.
8	Yuasa Soy Sauce Tour	Yuasa Soy Sauce Co., Ltd.	1464 Yuasa, Yuasa Town	0737-62-2100	http://www.yuasayouyu.co.jp/multilang/en/	info@marushinonke.com	Reservation required.
9	Sea Kayaking	Suhara Seaside House	966-1 Suhara, Yuasa Town	072-840-5644	http://www.mizuasobi.jp/	info@mizuasobi.com	English and Japanese spoken.
10	Plum Juice Making	Kishu Umeboshikan	1339 Yamauchi, Minabe Town	0739-72-2151	http://www.umekan.com/	nakahide@umeta.co.jp	Accompanied by an interpreter.
11	Bincho Charcoal Chime Making	Kishu Bincho Charcoal Promotion Museum	1267 Kiyokawa, Minabe Town	0739-76-2258	http://www.kishu-binchotan.jp	matsumot@gold.ocn.ne.jp	Accompanied by an interpreter.
12	Mandarin Orange Confectionery Making	Akizuno Garten Valencia Field	4558-8 Kamiakizu, Tanabe City	0739-35-1199	http://agarten.jp/	info@agarten.jp	Reservation required.
13	Kumanokodo Road Walk	Mi-Kumano	2F Daiman Bldg., 962-3 Minato, Tanabe City	0739-33-7451	http://www.mi-kumano.com	welcome@mi-kumano.com	Up to 5 people per guide
14	Agriculture and Forestry Experience/Farmhouse Lodging	Minamikishu Exchange Corporation	306-1 Ago, Shirahama Town	0739-53-0055	http://www.minamikishu.com/	minamikishu@samba.ocn.ne.jp	Those who understand Japanese. Reservation available in Japanese only.
15	Diving Experience	Club Noah Susami	4857-74 Susami, Susami Town	0739-55-4511	http://susami.club-noah.net/	noah-s@cello.ocn.ne.jp	Nothing in particular.
16	Walking in Heian Period Costume on Mt. Nachi and Daimonzaka Slope	Daimon-zaka-chaya Teahouse	392-2 Nachisan, Nachikatsuura Town	0735-55-0244	http://www.nachikan.jp/	nachikan@mb.aikis.or.jp	Cash payment.
17	Interaction with Dolphins and Whales	Taiji Whale Museum	2934-2 Taiji, Taiji Town	0735-59-2400	None	None	
18	Koze River Canoeing	Koza Tourist Association	231-3 Nishimukai, Kushimoto Town	0735-72-0645	http://www.kokoza.com/	info@kokoza.com	Accompanied by an interpreter.
19	Fishing Kayak	Hashikuiwa Beach Beach House Lapin	Hashikuiwa Beach, Kushimoto Town	090-3356-8305	http://www.kankou-kushimoto.jp/index.html	caohagan.aoki.kashino@gmail.com	Reservation required.
20	Tuna Farming Experience	Kushimoto Town Tourism Association	1797 Oshima, Kushimoto Town	0735-62-3171	http://www.kankou-kushimoto.jp/	info@kankou-kushimoto.jp	With an interpreter or someone who understands Japanese.
21	Handmade Turkish Lamp Experience	Resort Oshima	1035-6 Kashino, Kushimoto Town	0735-65-0840	http://www.resortoshima.com	info@resortoshima.com	Those who understand Japanese.
22	Log Rafting	Kitayama Village Tourist Center (Roadside Station Okutoro)	335 Shimoi, Kitayama Village	0735-49-2324	http://www.kumano-travel.com/index/en/action_Default_Index	info@tb-kumano.jp	Limited to people of 10 to 75 years of age.
23	Canyoning	Outdoor Club Iceman	398 Takehara, Kitayama Village	080-2611-5873	http://m-aisu.com/	info@oc-iceman.com	Those who understand Japanese.
24	Fruit Picking (Strawberries)	Kishigawa Tourist Strawberry Picking Farm	238 Kodo Kishigawa-cho, Kinokawa City	0736-64-7212	None	eco6089@yahoo.co.jp	Both individuals and organizations need to make a reservation.
25	Fruit Picking (Peaches, Persimmons, and Mandarin Oranges)	Katsuragi Town Tourist Farms	Katsuragi Town	0736-22-0300	http://www.katsuragi-kanko.jp/fruitgari_kanonouen.html	kankou@town.katsuragi.wakayama.jp	
26	Fruit Picking (Grapes and Pears)	Arida Kyoho-grape Village Morien	1054-24 Kawaguchi, Aridagawa Town	0737-32-3843	http://www.budouen.net/	sharaku@luck.ocn.ne.jp	Nothing in particular.
27	Fruit Picking (Oranges)	Dondon Farm	1003-2 Sho, Aridagawa Town	0737-52-6661	http://www.dondonhiroba.com/	info@dondonhiroba.com	Accompanied by someone who understands Japanese.
28	Fruit Picking (Oranges)	Akizuno Sales Store Kitera	1487-1 Kamiakizu, Tanabe City	0739-35-1177	http://www.kiteraga.com/index.html	info@kiteraga.com	Reservation up to 3 PM the previous day.
29	Fruit Picking (Blueberries)	Asai Farm	512 Minamikanaya, Hirogawa Town	0737-62-3873	http://blueberry-asai.konomise.info/index.html	nsb25467@nifty.com	Those who understand Japanese.
30	Fruit Picking (Strawberries, Melons, and Oranges)	Anchin	1745-3 Kanemaki, Hidakagawa Town	0738-22-2964	http://anchin.jp/eng/fruit.html	None	Those who understand Japanese.
31	Fruit Picking (Strawberries and Melons)	Kinokuni Farm	1335-4 Ueno, Nada Town, Gobo City	0738-29-3070	http://kinokunifarm.jp/	info@kinokunifarm.jp	Those who understand Japanese.
32	Fruit Picking (Strawberries)	Ricolina	1713-35 Asso, Kamitonda Town	0739-63-2150	http://www.ricolina.farm	Agricultural Cooperative Association Ikuma	Nothing in particular.